

Novatel MiFi 2200 Activation Guide

Your MiFi modem contains software for installing the MobiLink Connection Manager. Before activating the MiFi, follow the steps below to install the MobiLink software and drivers.

IMPORTANT: Activate the MiFi on a Windows® PC or in a store. It cannot be activated on a tablet.


STEPS TO INSTALL THE MIFI MOBILINK SOFTWARE ON A WINDOWS PC


(Skip down to the activation steps if the MobiLink software is already installed.)

1) Connect your MiFi modem to your computer's USB slot using the provided USB cable.

2) Select the **Windows start menu**. 

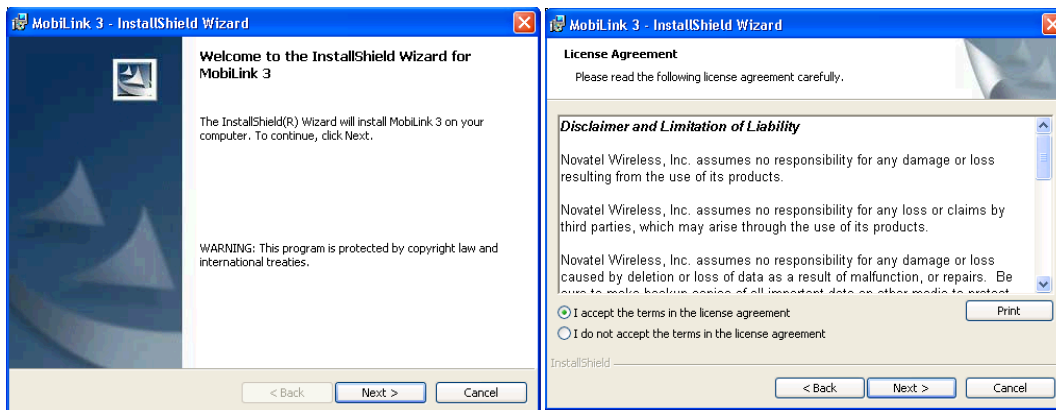
3) Select and open **My Computer**. 

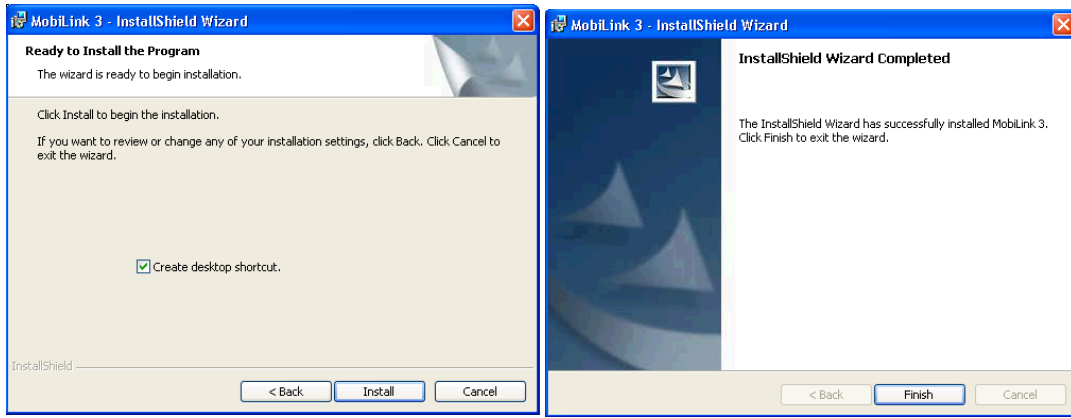
4) Select **Novatel MobiLink** icon. 
(Right click and select Explore if it does not auto launch)

5) Select the **Installer.exe** file. 

6) Follow the on-screen instructions.

If a User Account Control warning window opens, click Allow.





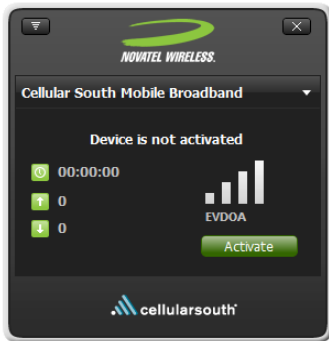
STEPS TO ACTIVATE THE MiFi

Note: When activating your MiFi, **do not unplug it** from your computer until the activation has completely finished. The device will be completely finished activating when the MobilLink 3 Connection Manager displays “Ready” as shown in the activation steps below. **The MiFi will reboot two (2) times before the activation has completed successfully.**

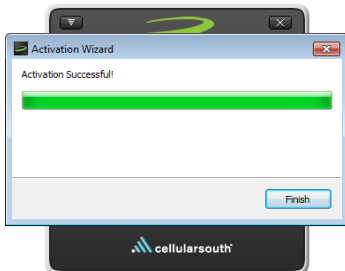
- 1) Start the MobilLink Connection Manager by selecting the MobilLink Icon.



- 2) Select the Activate button.



- 3) Select the Finish button.



- 4) The MiFi will reboot two (2) times, and will then show “Ready.” Now your MiFi is activated and ready to use.
Note: The MiFi will not allow WiFi connections when connected to the PC.

